



Crabtree, Rohrbaugh & Associates

WYOMISSING AREA SCHOOL DISTRICT

DESIGN DEVELOPMENT PRESENTATION

JANUARY 20, 2021

DESIGN DEVELOPMENT PRESENTATION

- **Wyomissing Hills K-4 Educational Center**
 - Site Plan Review
 - Floor Plan Review
 - Typical Room Layouts
 - Renderings
- **Wyomissing Area Jr/Sr High School**
 - Site Plan Review
 - Floor Plan Review
 - Typical Room Layouts
 - Renderings
- **Project Schedule**

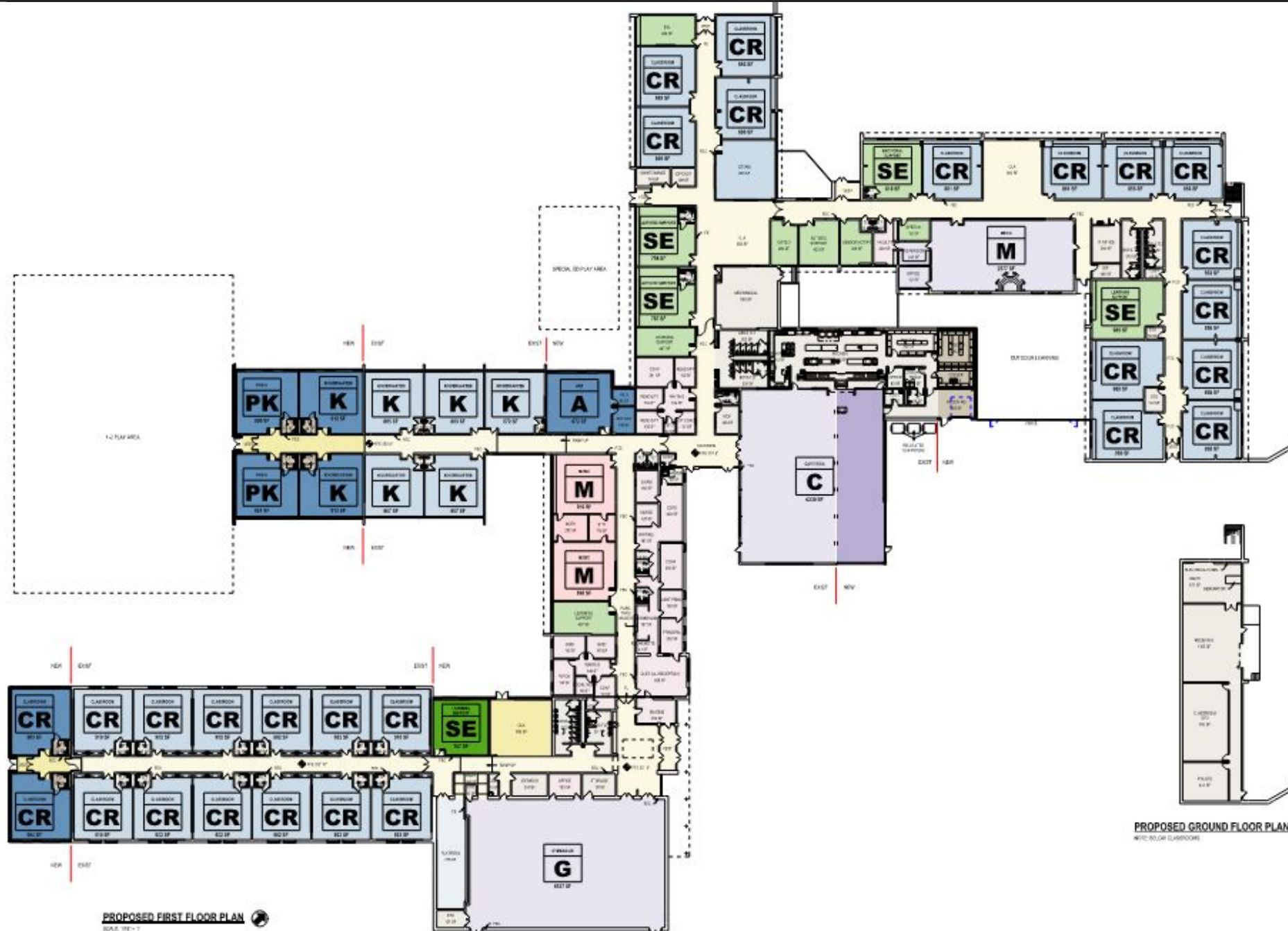
EXISTING WYOMISSING HILLS K-4



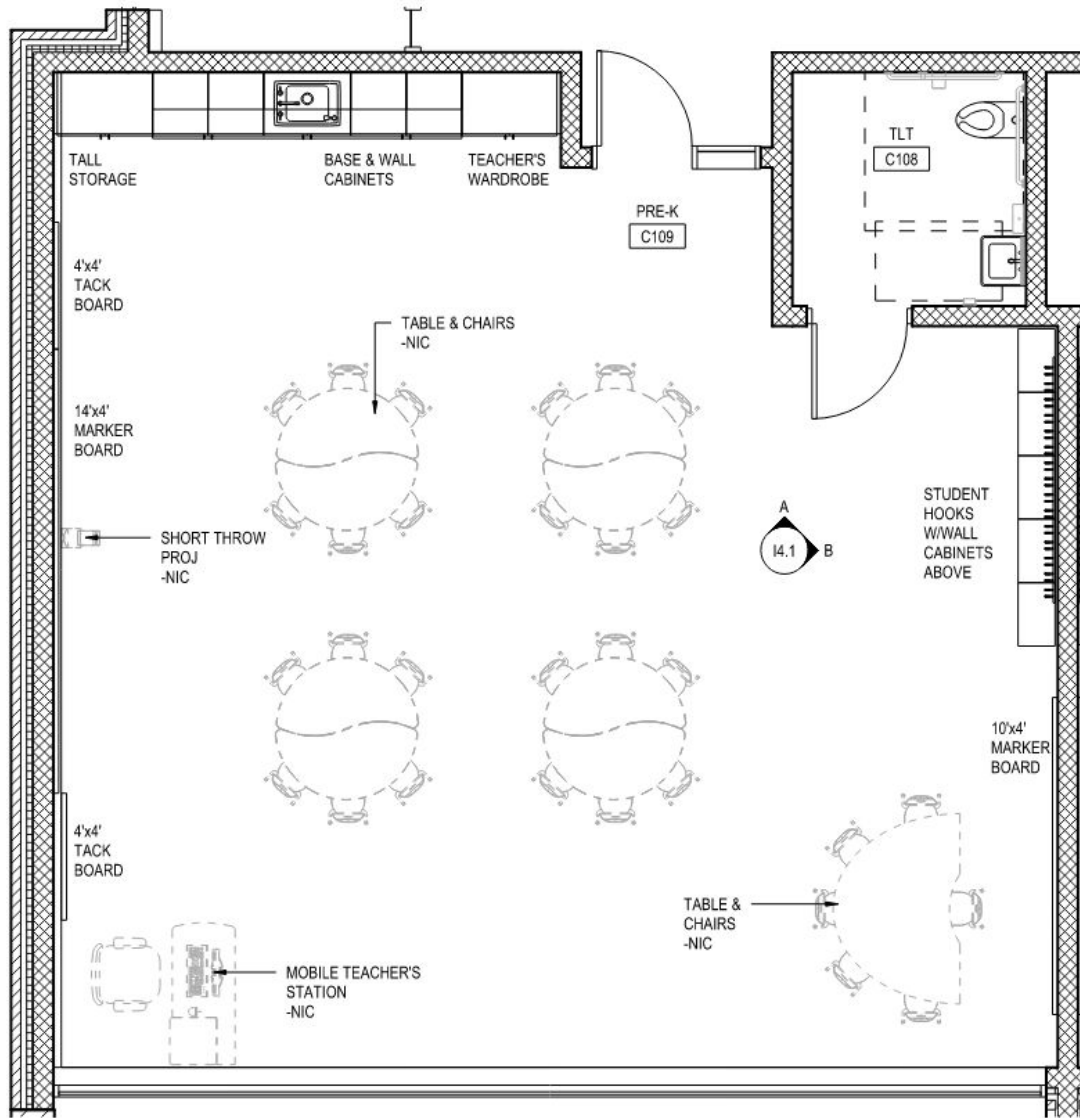
PROPOSED WYOMISSING HILLS K-4



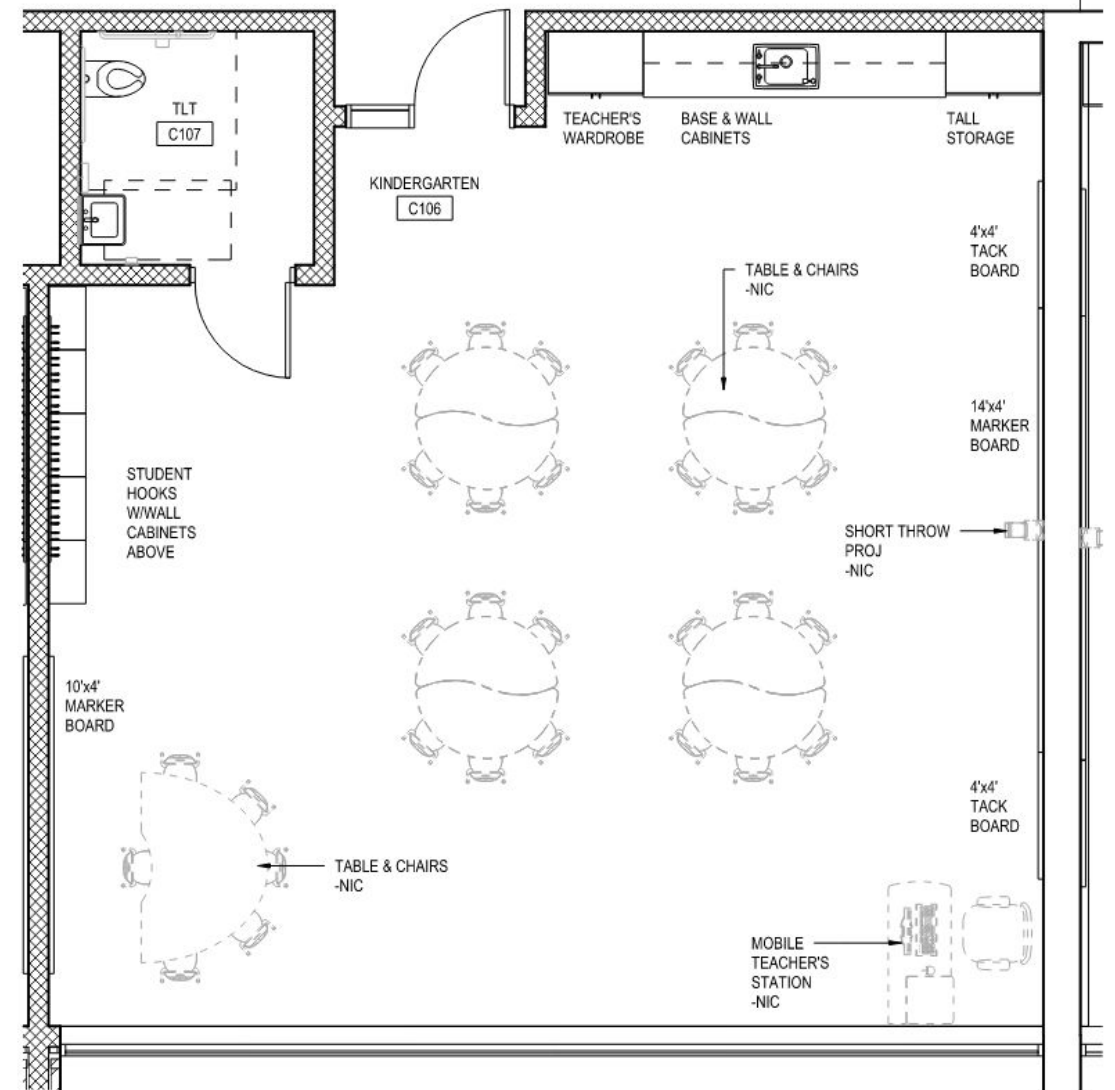
PROPOSED WYOMISSING HILLS K-4



PROPOSED WYOMISSING HILLS K-4



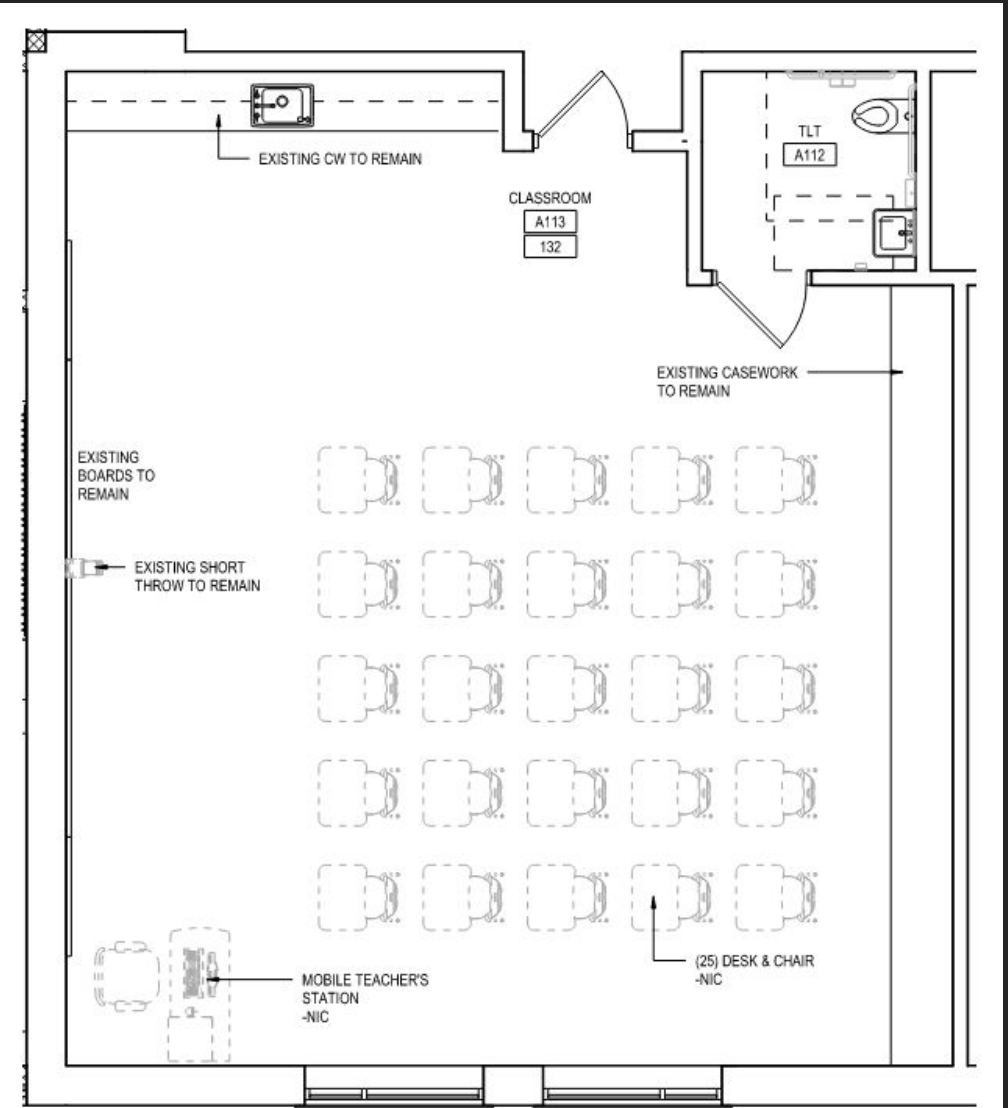
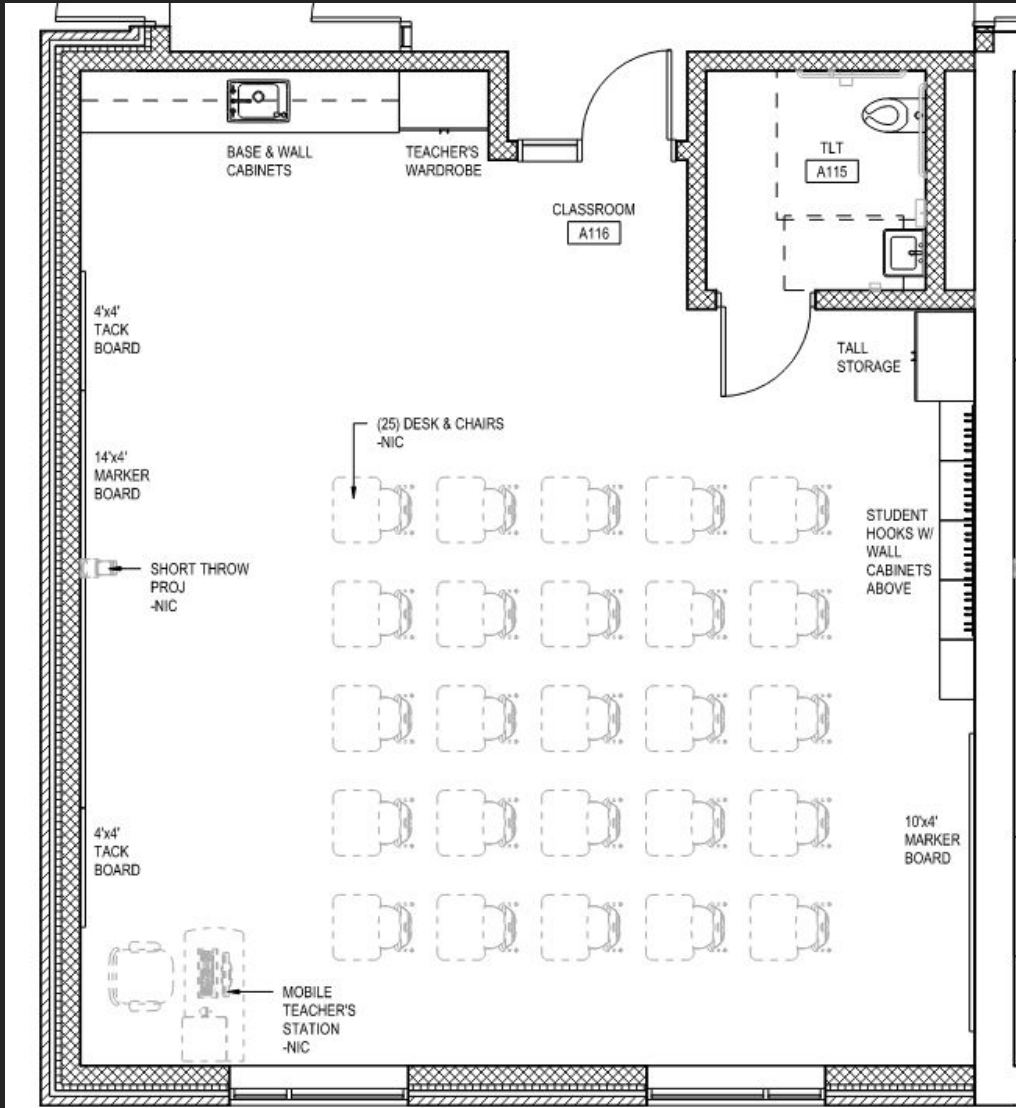
1 PRE-K CLASSROOM
14.1 1/4" = 1'-0"



2 KINDERGARTEN - NEW
14.1 1/4" = 1'-0"

TYPICAL PRE-K / KINDERGARTEN CLASSROOM LAYOUT

PROPOSED WYOMISSING HILLS K-4

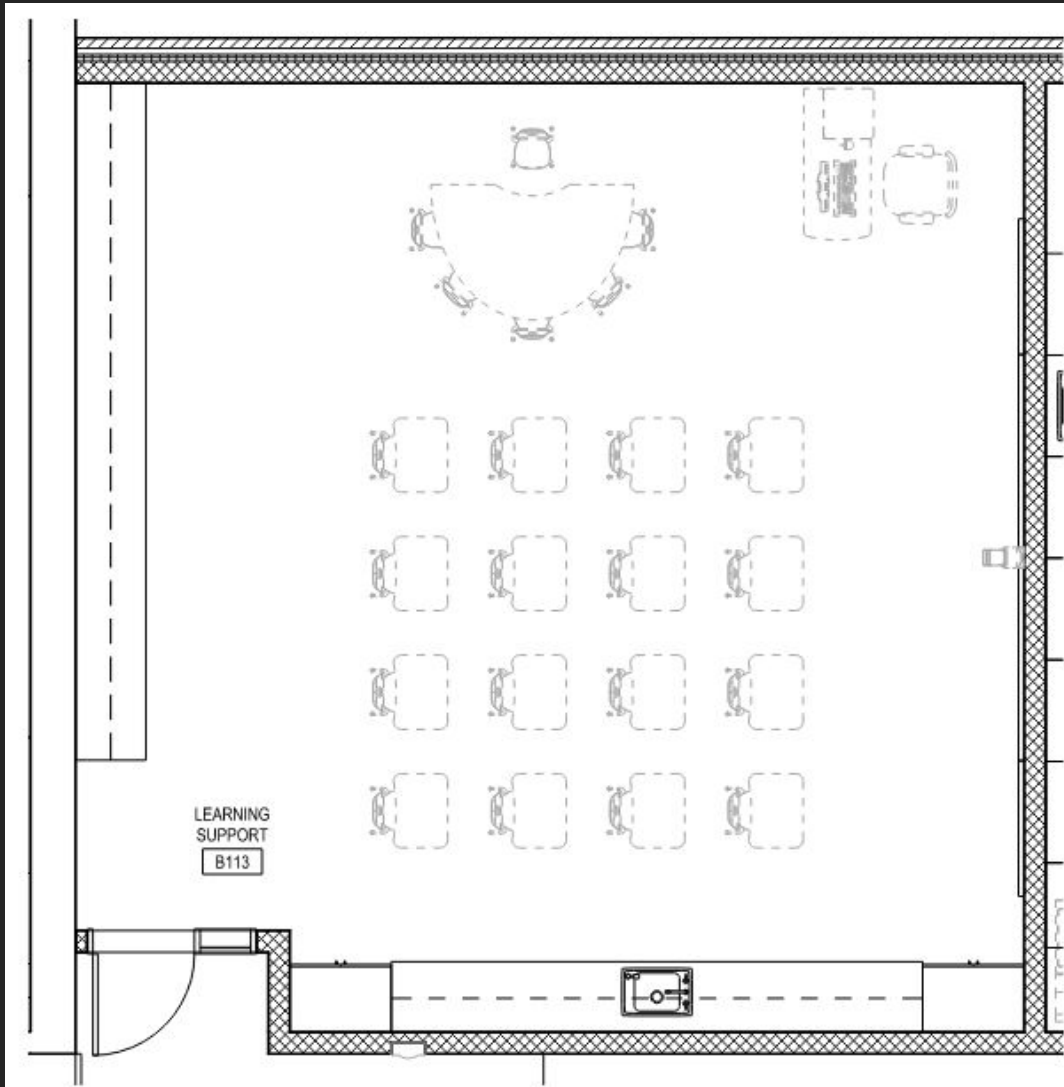


1 TYPICAL CLASSROOM - NEW
14.2 1/4" = 1'-0"

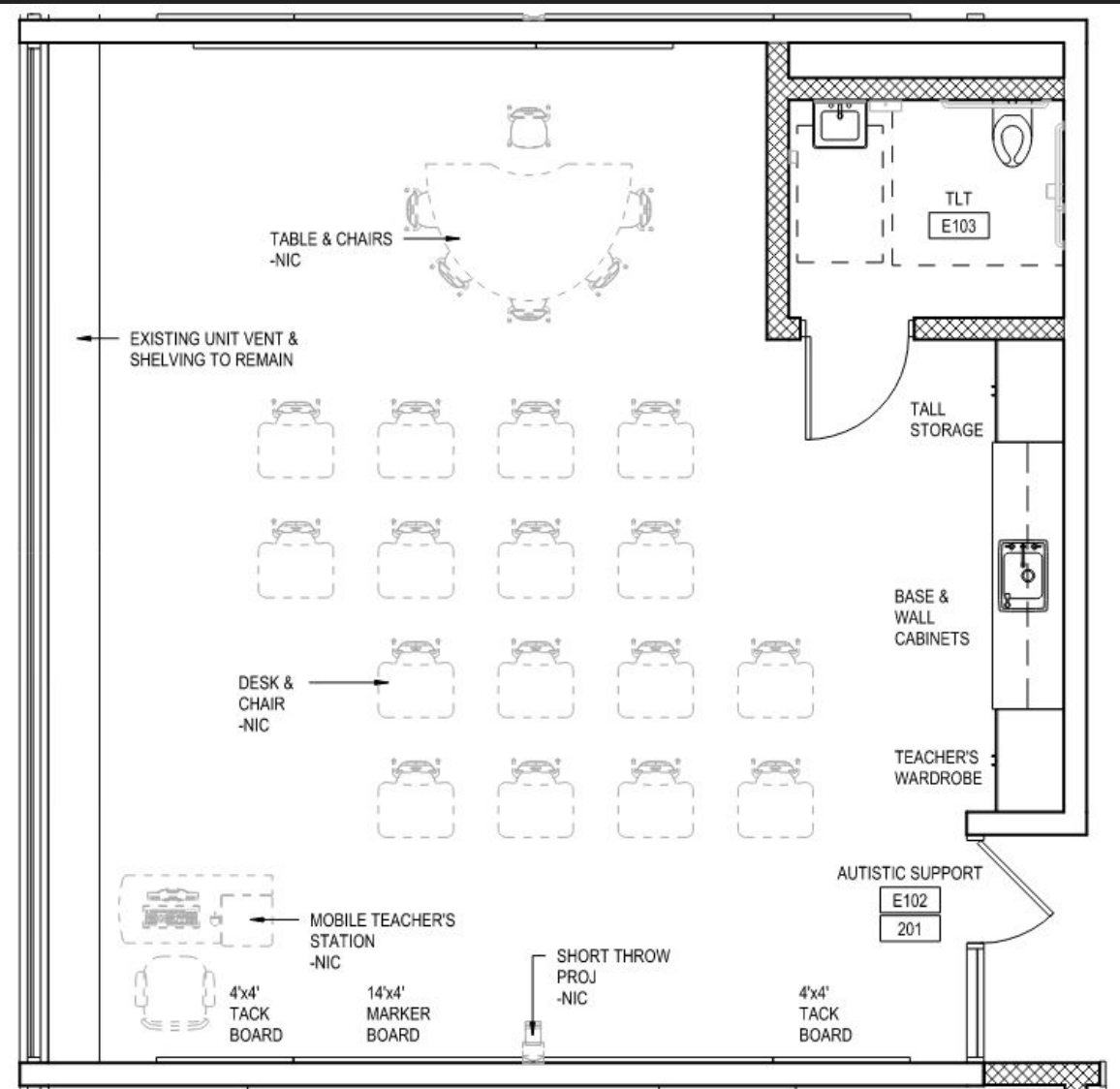
2 TYPICAL CLASSROOM - EXISTING
14.2 1/4" = 1'-0"

TYPICAL CLASSROOM LAYOUT

PROPOSED WYOMISSING HILLS K-4



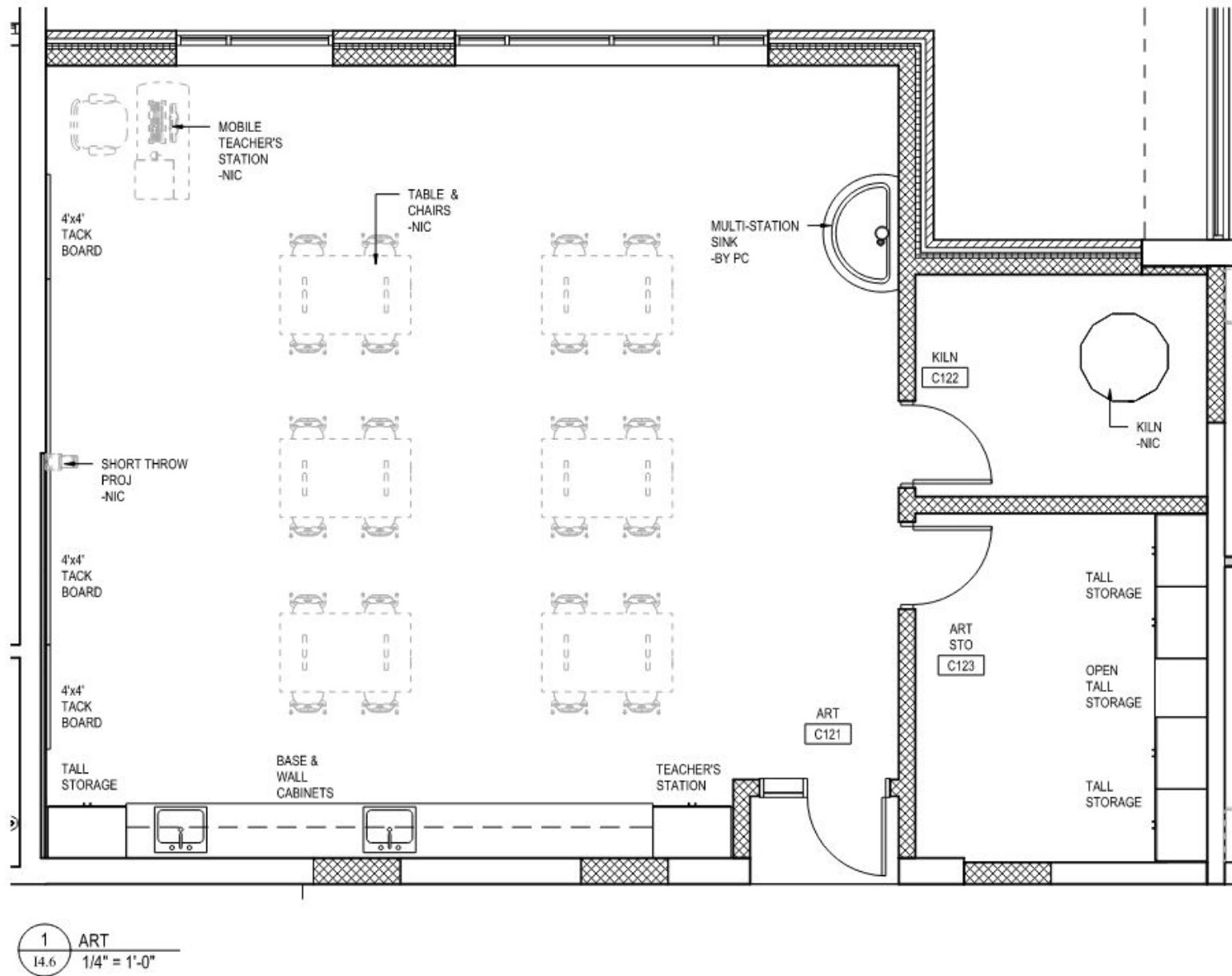
1 LEARNING SUPPORT
14.4 1/4" = 1'-0"



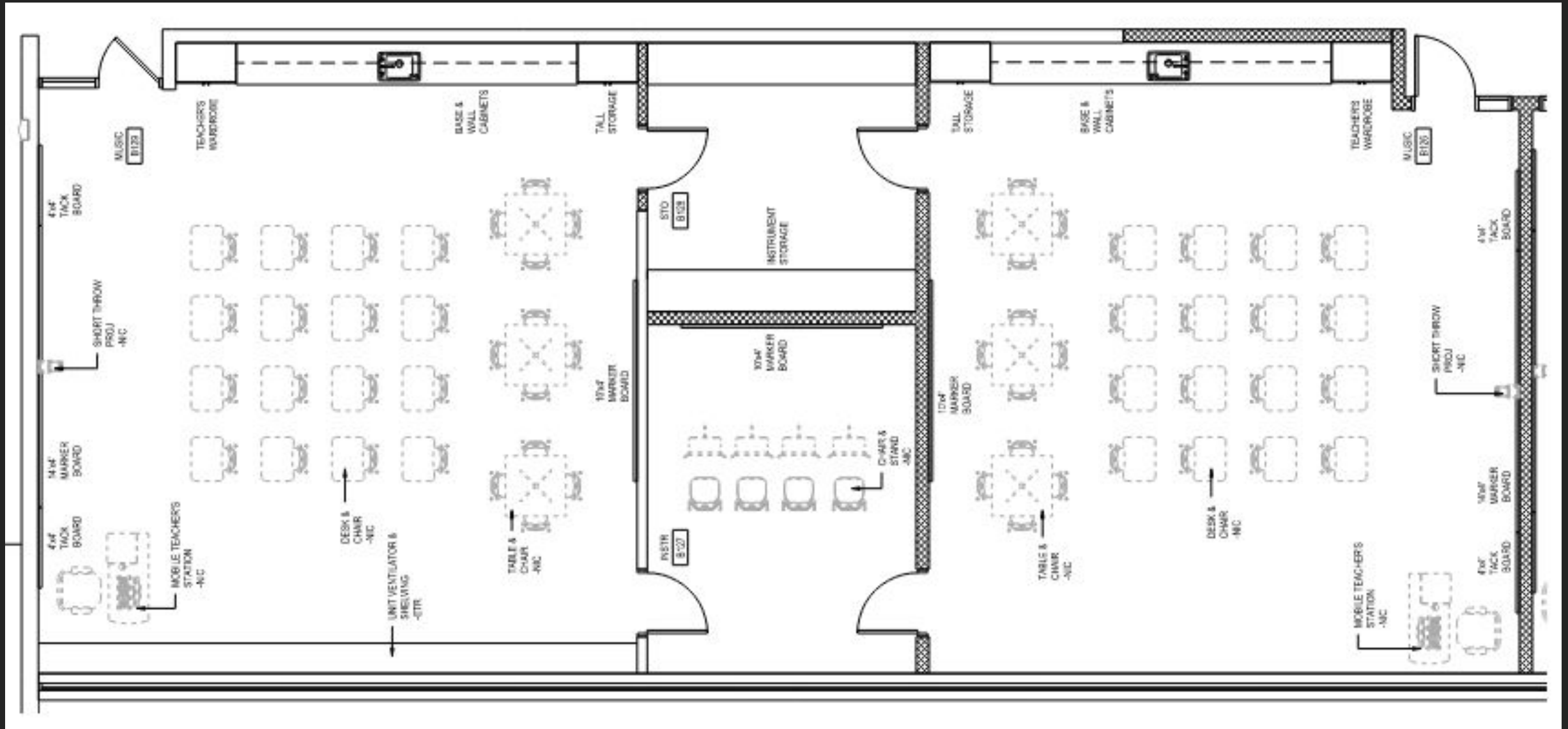
1 E102 AUTISTIC SUPPORT
14.5 1/4" = 1'-0"

TYPICAL SPECIAL EDUCATION CLASSROOM LAYOUT

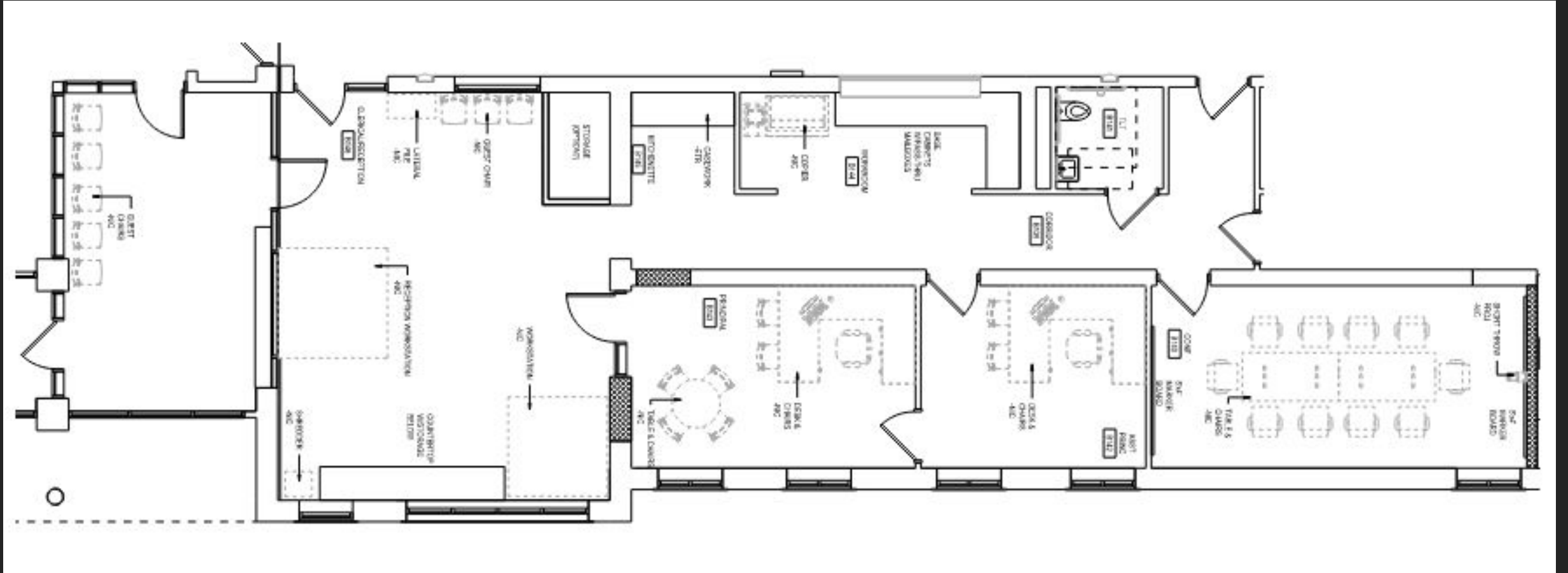
PROPOSED WYOMISSING HILLS K-4



ART CLASSROOM LAYOUT

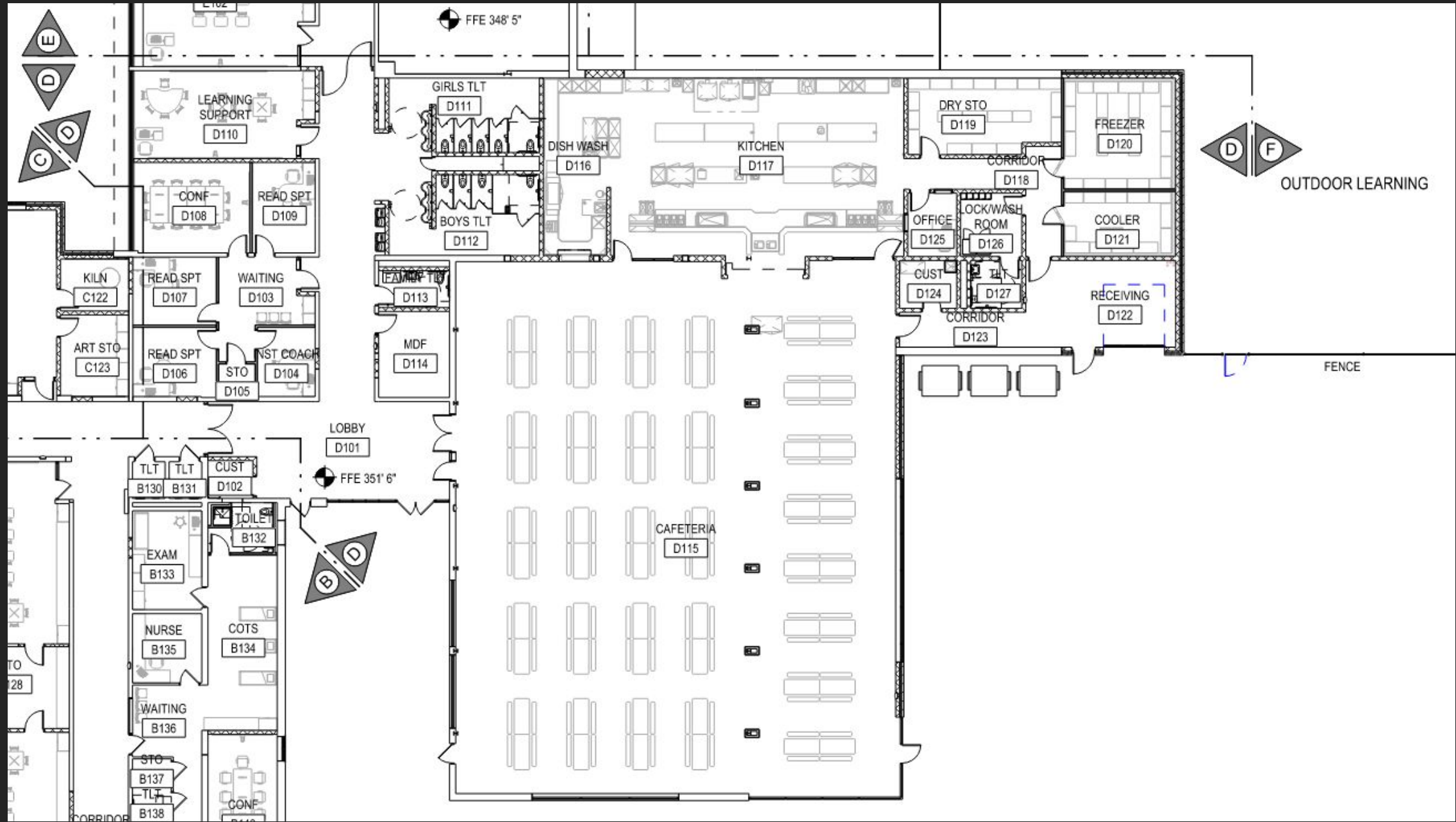


MUSIC CLASSROOM LAYOUTS



ADMINISTRATION AREA LAYOUT

PROPOSED WYOMISSING HILLS K-4



CAFETERIA / KITCHEN AREA LAYOUT

PROPOSED WYOMISSING HILLS K-4



PROPOSED WYOMISSING HILLS K-4



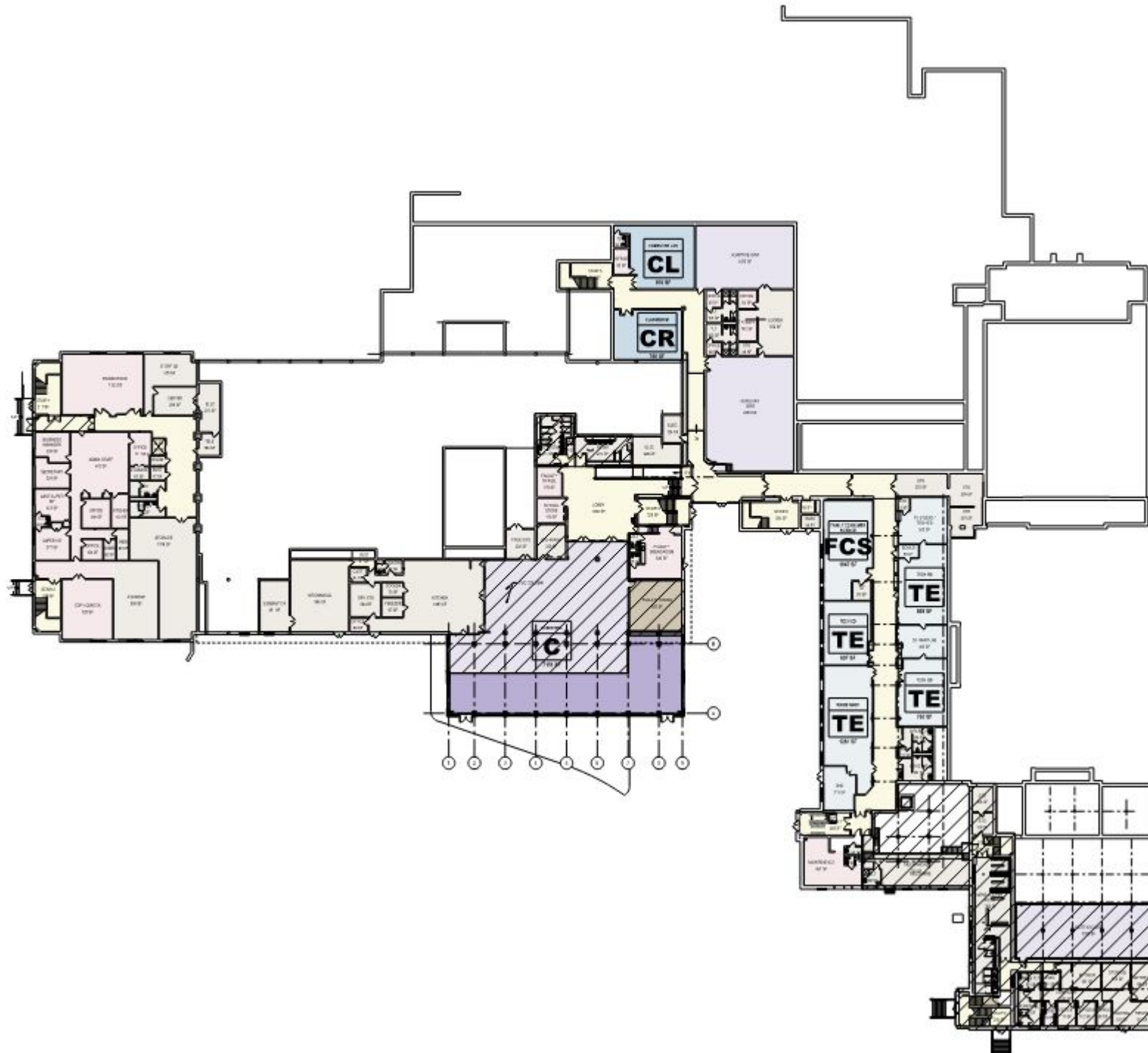
PROPOSED WYOMISSING HILLS K-4



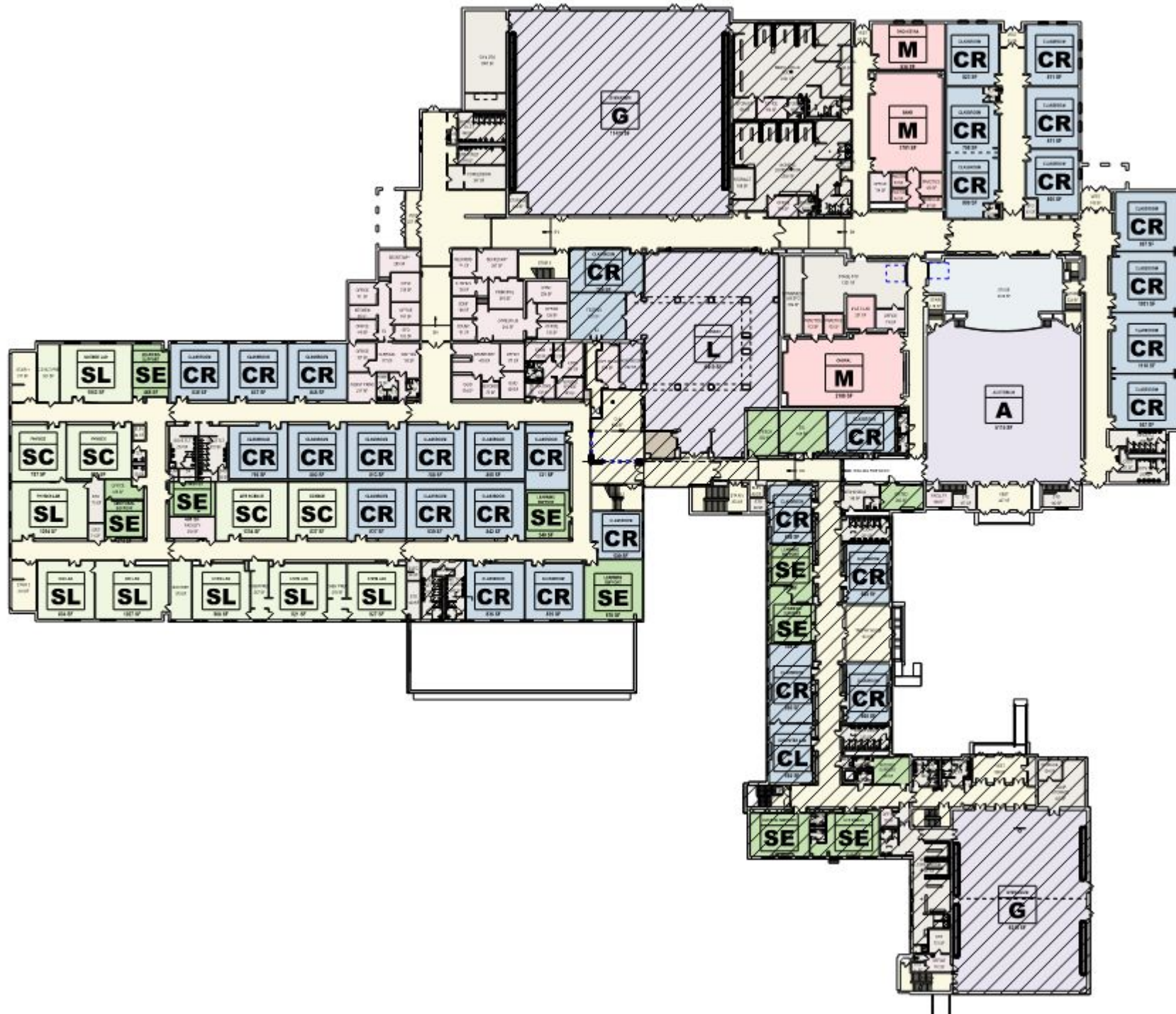
PROPOSED WYOMISSING AREA JR/SR HIGH SCHOOL



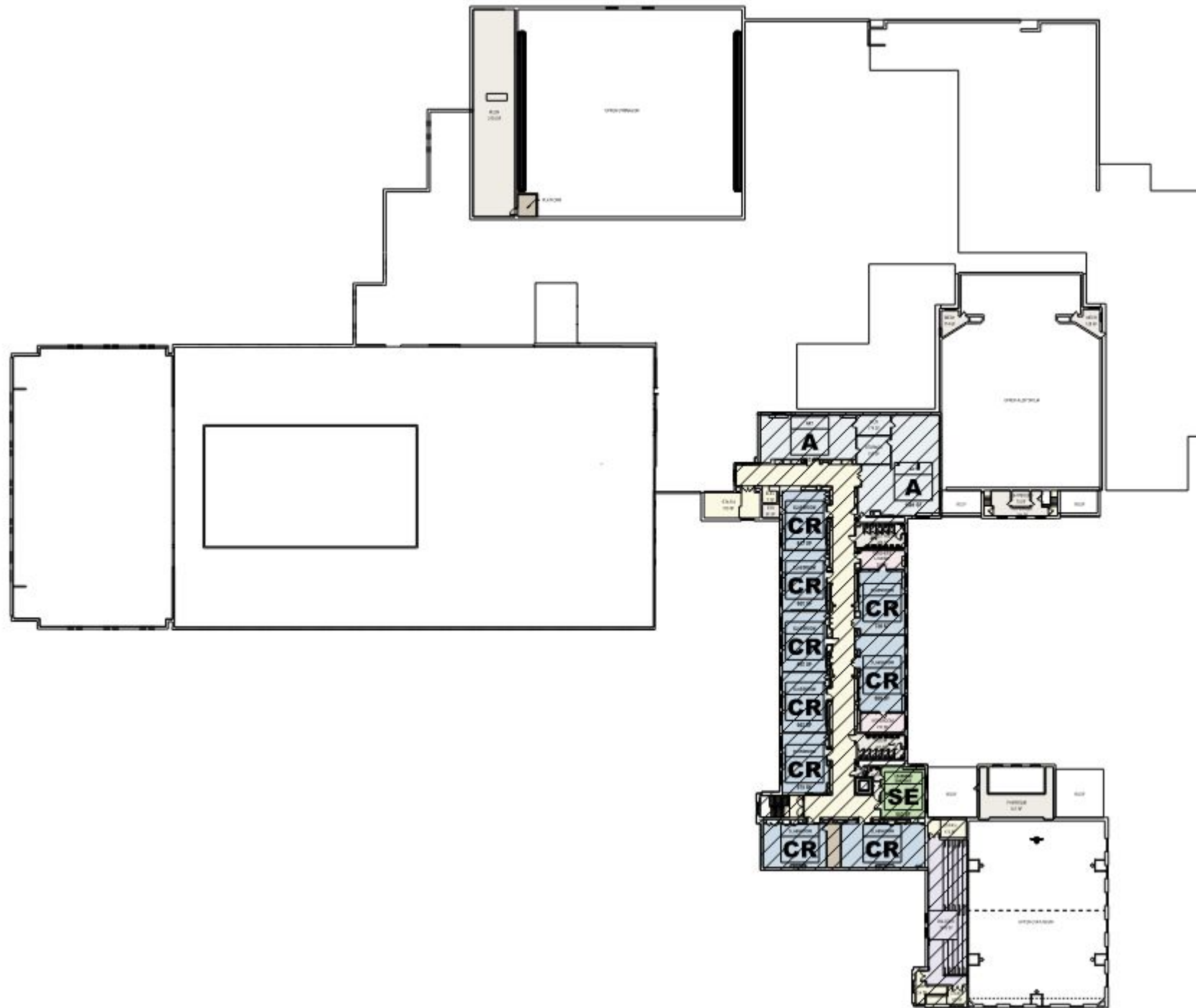
PROPOSED WYOMISSING AREA JR/SR HIGH SCHOOL



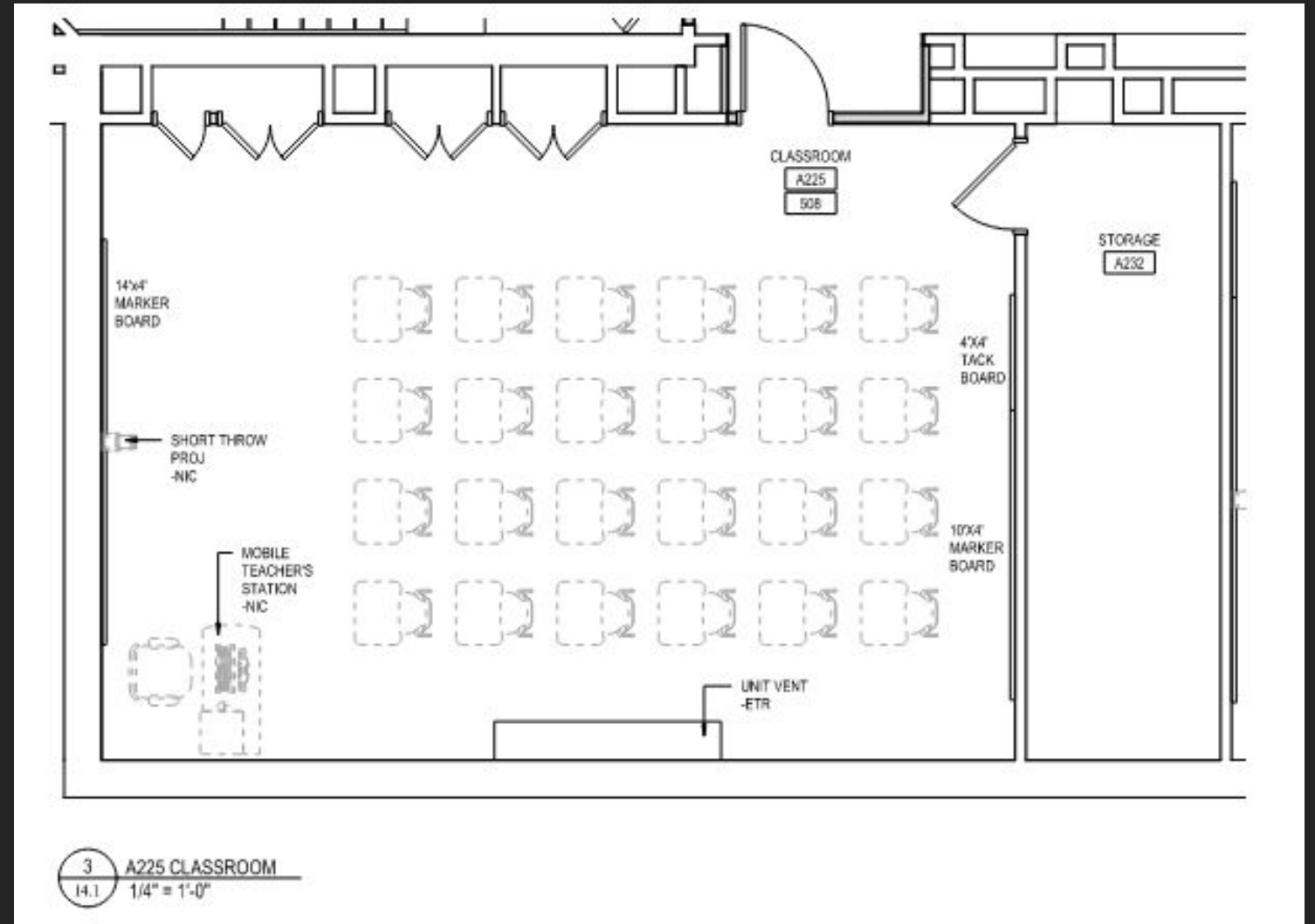
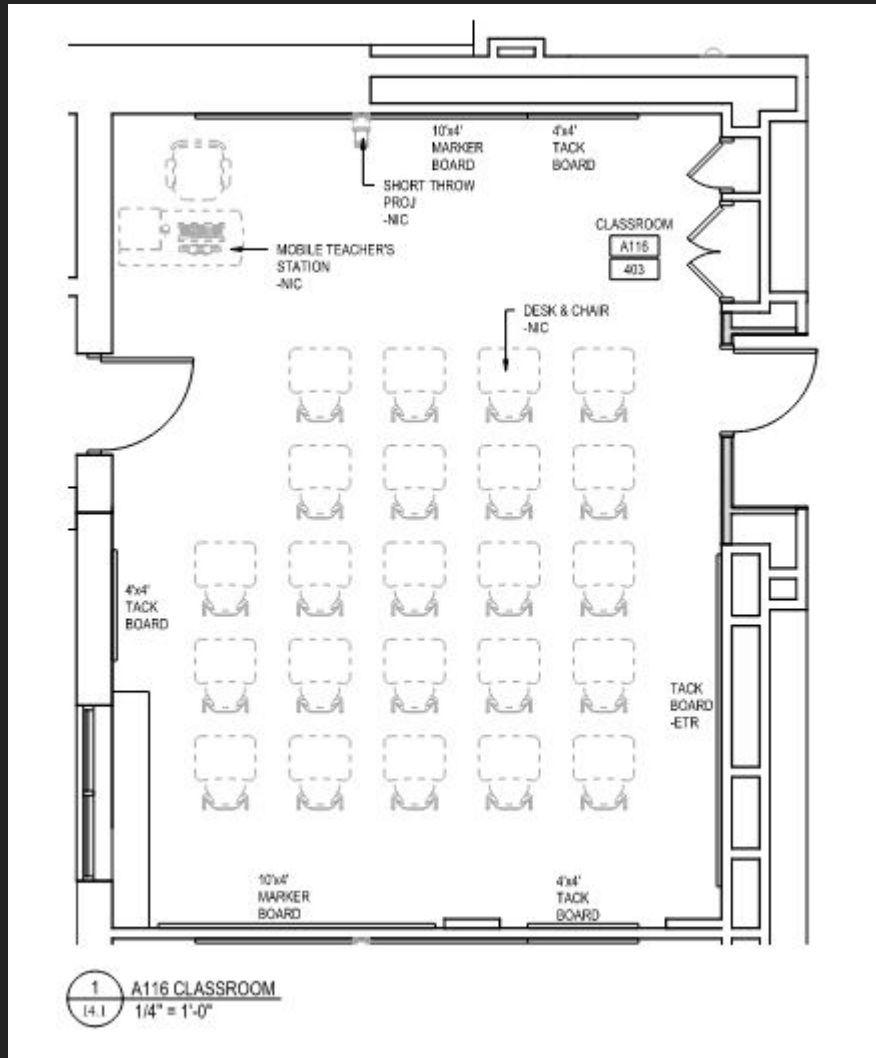
PROPOSED WYOMISSING AREA JR/SR HIGH SCHOOL



PROPOSED WYOMISSING AREA JR/SR HIGH SCHOOL

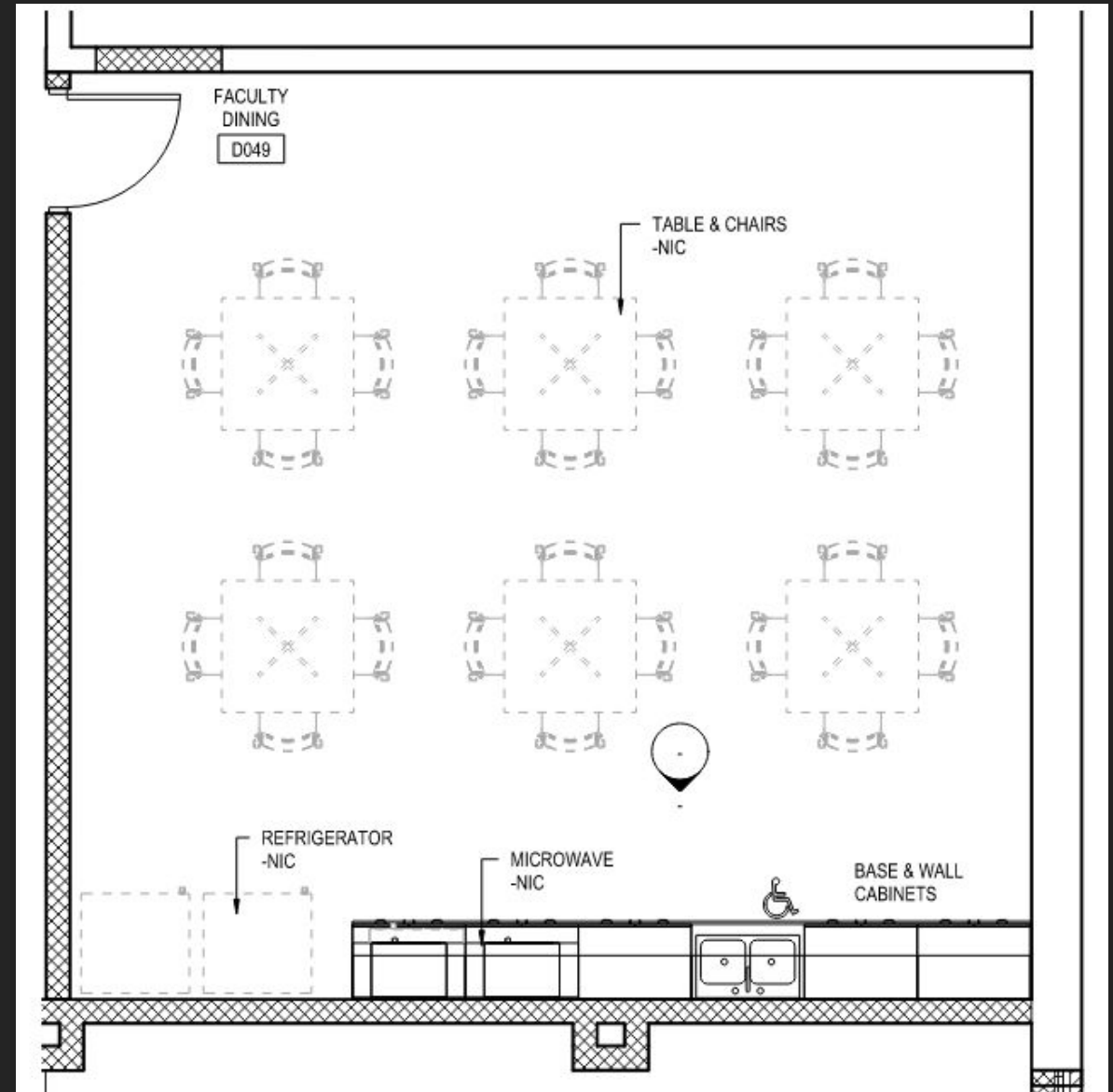
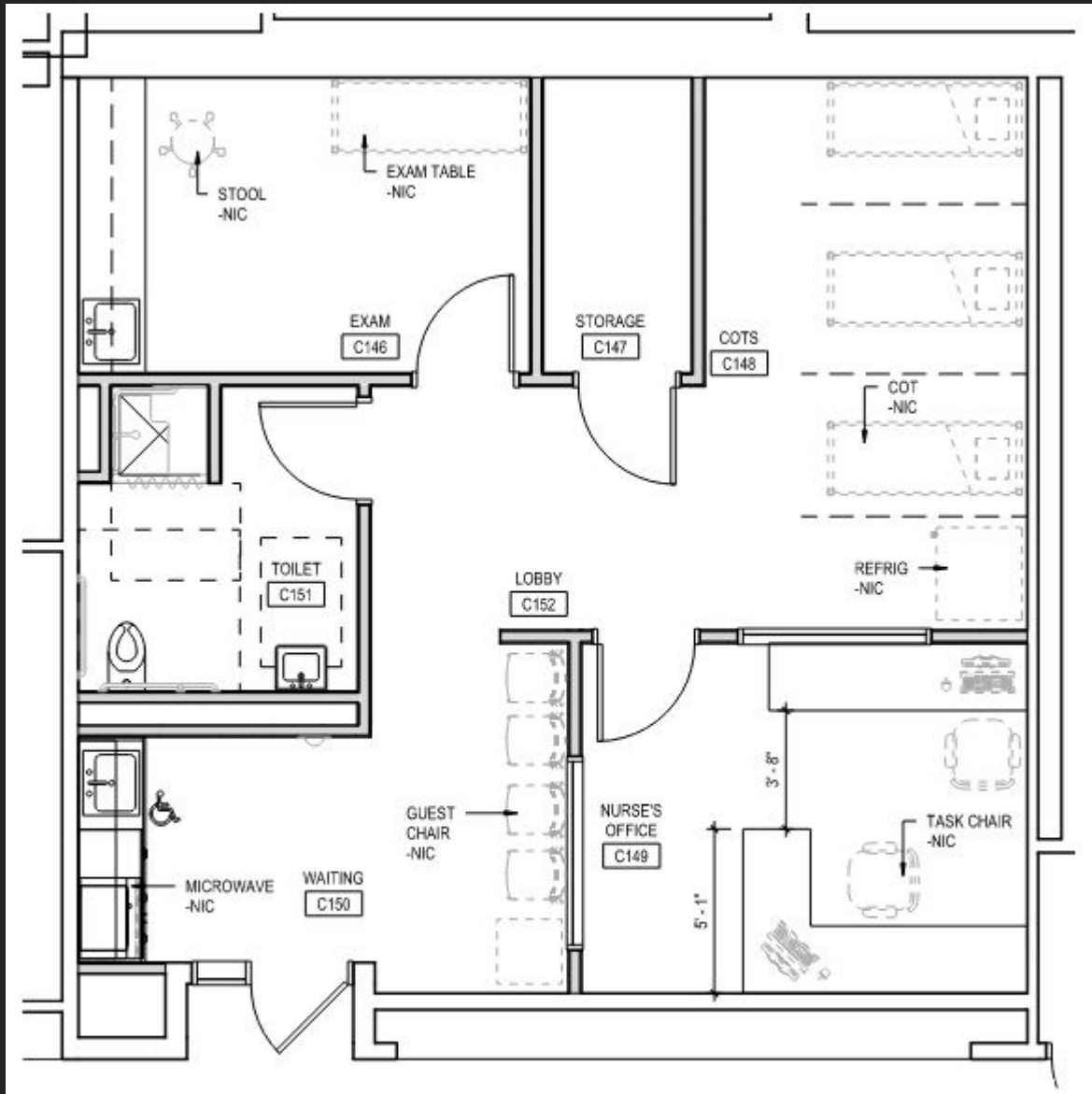


PROPOSED WYOMISSING AREA JR/SR HIGH SCHOOL



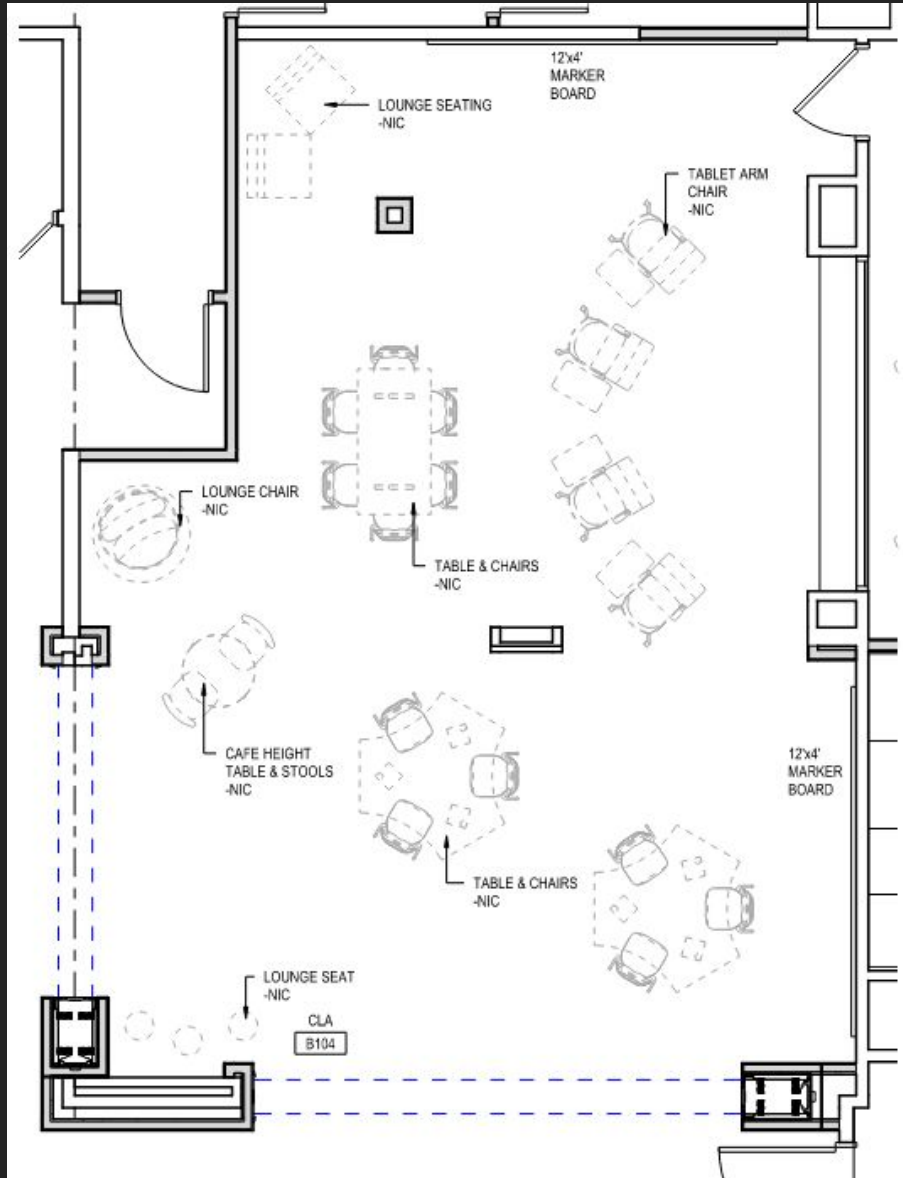
TYPICAL CLASSROOM LAYOUT

PROPOSED WYOMISSING AREA JR/SR HIGH SCHOOL

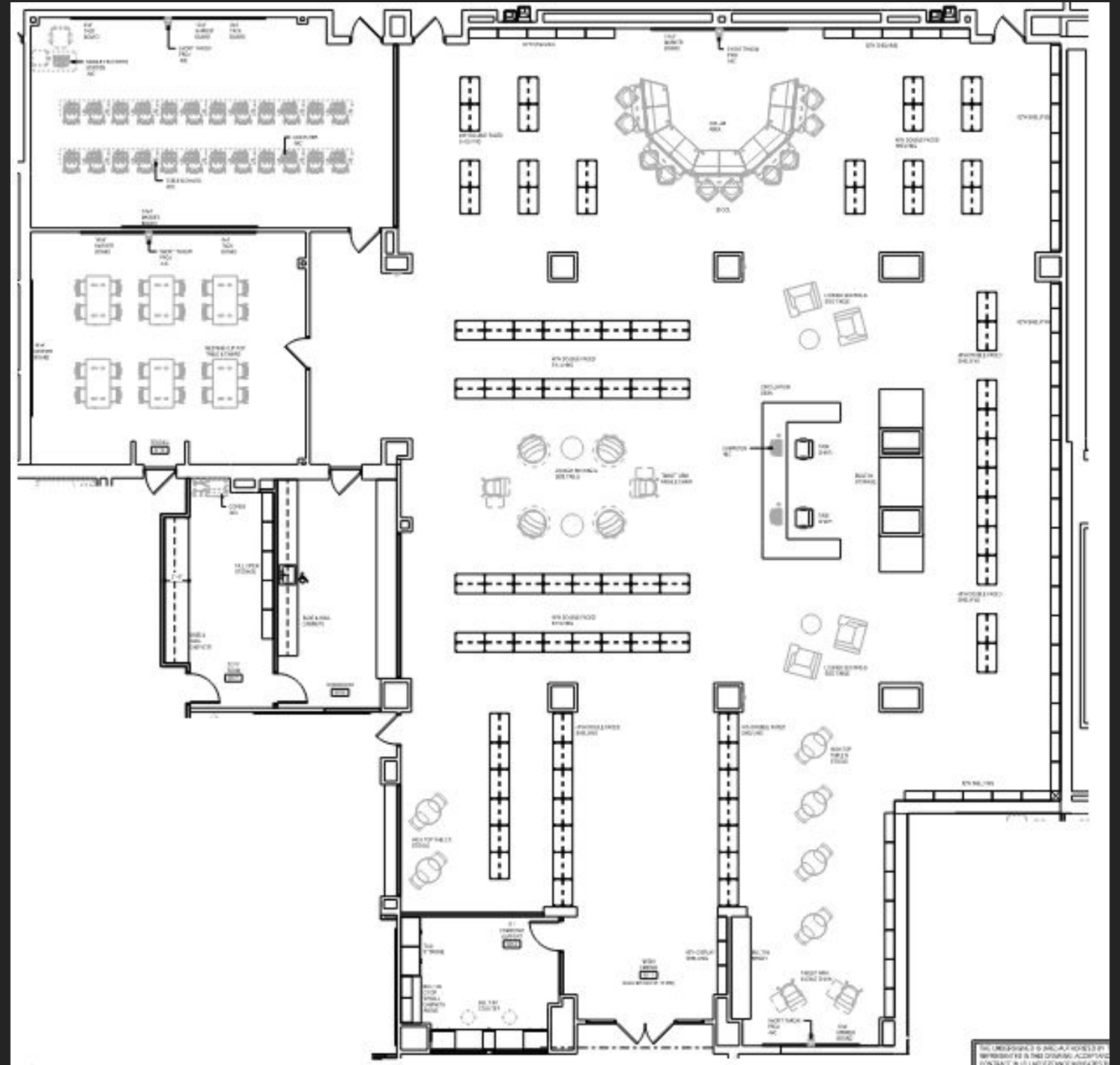


HEALTH SUITE & FACULTY ROOM LAYOUTS

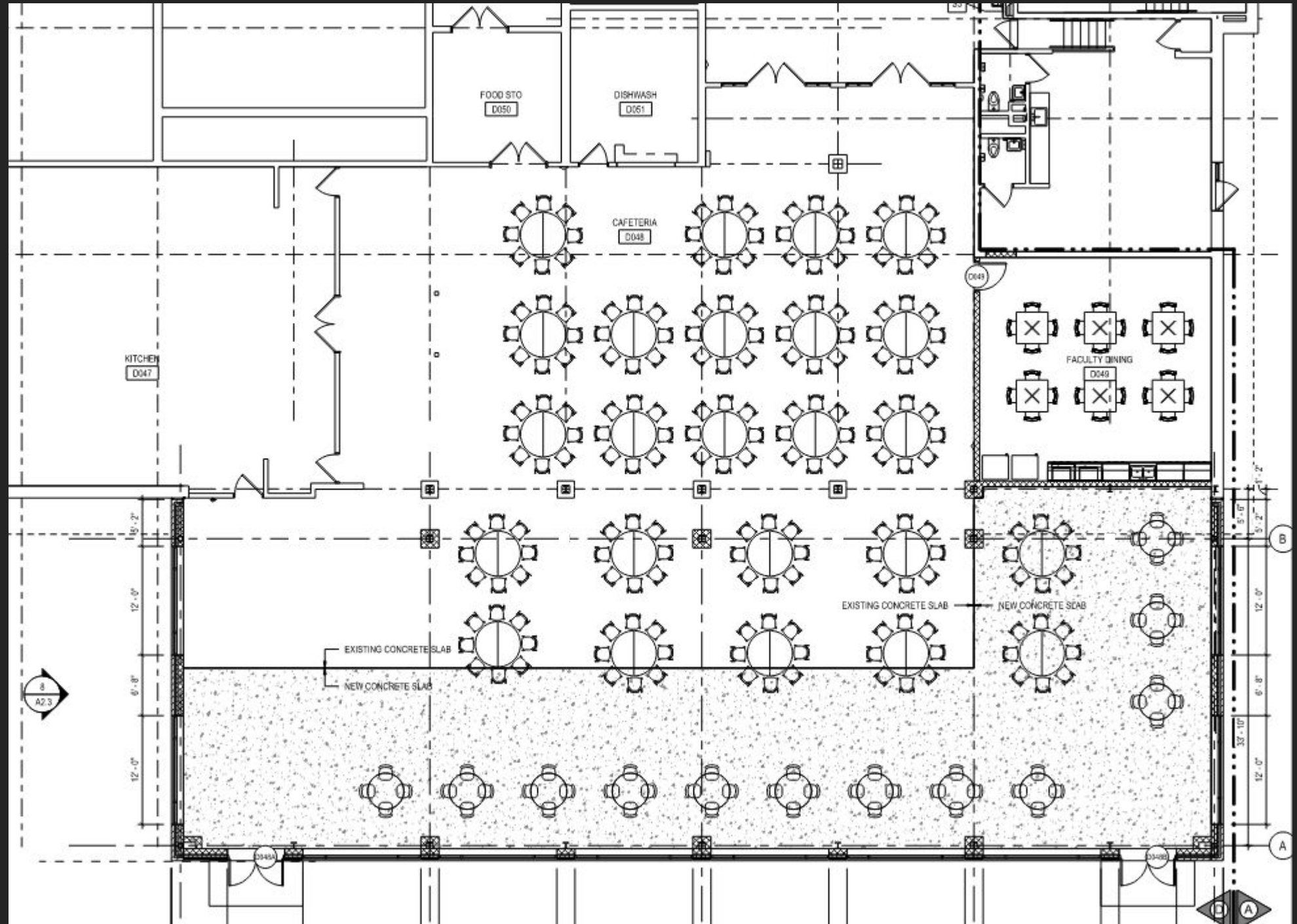
PROPOSED WYOMISSING AREA JR/SR HIGH SCHOOL



MEDIA CENTER / CLA LAYOUTS



PROPOSED WYOMISSING AREA JR/SR HIGH SCHOOL



CAFETERIA

PROPOSED WYOMISSING AREA JR/SR HIGH SCHOOL



PROPOSED WYOMISSING AREA JR/SR HIGH SCHOOL



PROPOSED WYOMISSING AREA JR/SR HIGH SCHOOL



- 09/30/20 Hills site plan and survey review**
- 10/12/20 Schematic Design Board Presentation**
- 10/22/20 Curriculum Review with District**
- 11/11/20 Hills Faculty Reviews**
- 11/16/20 Special Education Review for Hills and Jr/Sr HS**
- 11/17/20 Consultant Review of Design Development Sets**
- 11/18/20 Board Workshop**
- 12/02/20 Jr/Sr HS Faculty Review**
- 12/03/20 Code and Fire Marshall Review**
- 12/09/20 HVAC System Coordination with Trane**
- 12/11/20 Hills Food Service Coordination Meeting**
- 12/16/20 Hills Administration Suite Security Upgrade Meeting**
- 01/11/21 Design Development Board Presentation**

FUTURE MILESTONE DATES

- 01/13/21** Jr/Sr HS Faculty Review
- 01/20/21** Hills Faculty Review
- 01/20/21** Geotechnical Boring Survey at Hills & Jr/Sr HS
- 01/20/21** Board Workshop
- 03/2021** Coordination Meeting with District
- 04/2021** Coordination & QA Meeting with District
- 04/12/21** Committee Meeting - Review Construction Docs
- 04/26/21** Board Meeting - Approve Construction Docs for Bidding
- 04/27/21** Advertise / Release Bidding Documents
- 05/20/21** Receive Bids
- 05/24/21** Board Meeting - Approve Bids
- 06/14/21** Start Construction
- 08/30/21** Substantial Completion
- 10/30/21** Final Completion

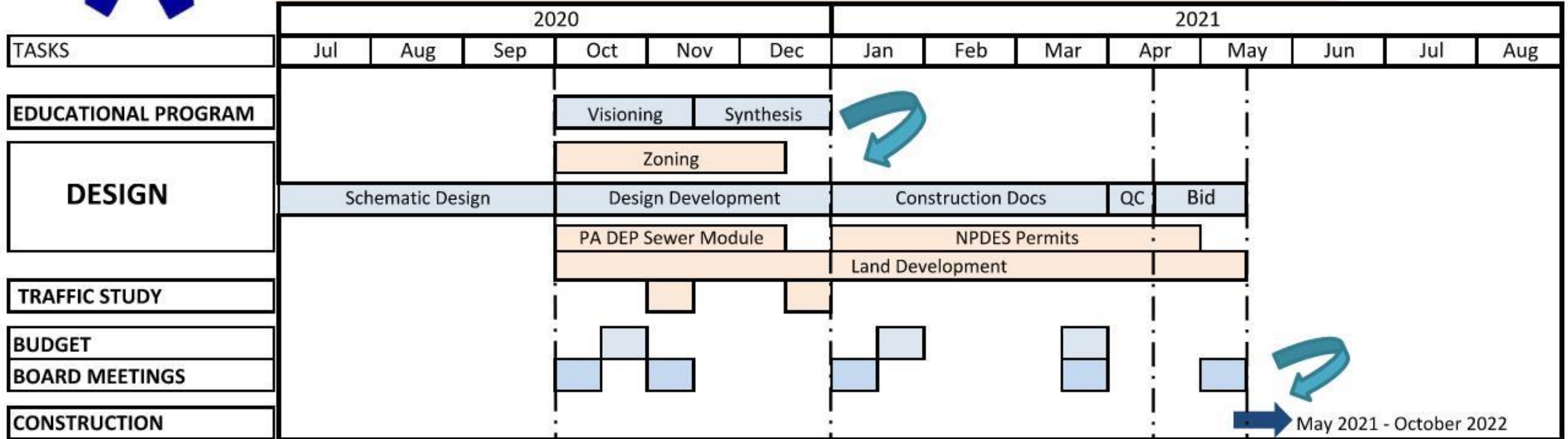
OVERALL PROJECT SCHEDULE



WYOMISSING AREA SCHOOL DISTRICT

DESIGN BUILDING RENOVATIONS & ADDITIONS

REGULATORY REVIEWS & APPROVALS



EDUCATIONAL PROGRAM

- Strategy sessions with faculty/staff/stakeholders
- Establish guiding principles and program
- Define physical parameters to support Vision
- Synthesis of input / Collaboration on design

DESIGN

- Preliminary designs implementing educational program
- Identifies building / site & organization
- Evaluate traffic and Penn Dot requirements

BUDGET

- Discuss scope of work / expectations
- Evaluate building, site and operational costs
- Preliminary costs / Final Board approved budget
- Develop alternates to control budget & flexibility

BOARD MEETINGS

- Proper planning to guide decision making
- Coloration with Board / Administration / Community
- Schedule / Budget



Providing a client oriented approach to
architecture

Questions/Discussions



Crabtree, Rohrbaugh & Associates
www.cra-architects.com